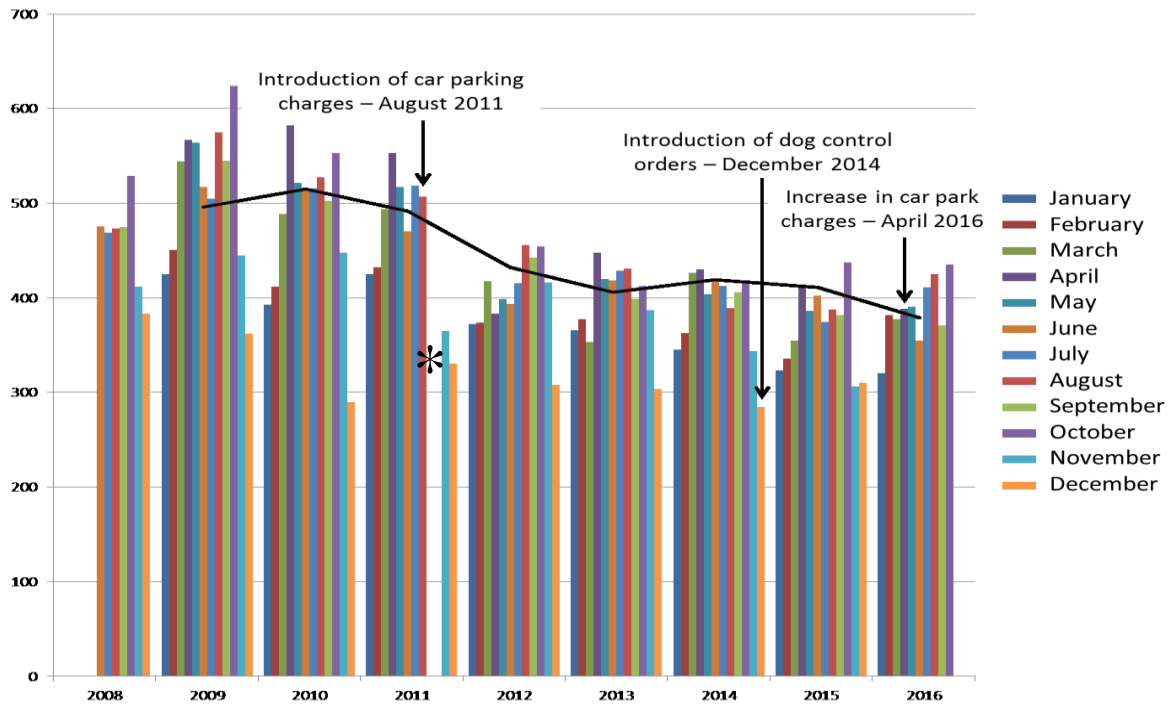


APPENDIX 2A. Dog Control Orders – summary Data and interpretation – used to inform January 2017 report to the Epping Forest and Commons Committee

Chart A. Annual vehicle numbers 2008 – 2016.



*No car park data due to equipment failure. NB solid black line indicates the moving average across the years.

Chart B. Estimate of annual visitor numbers. 2008 - 2016

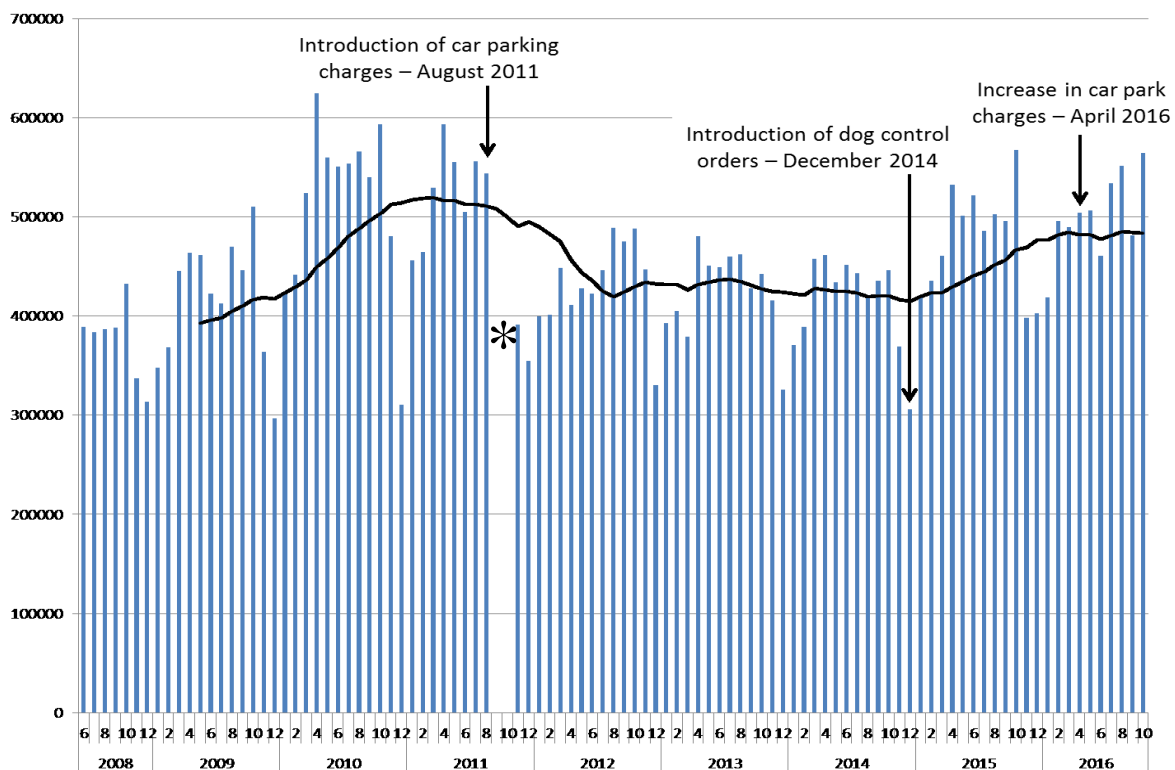
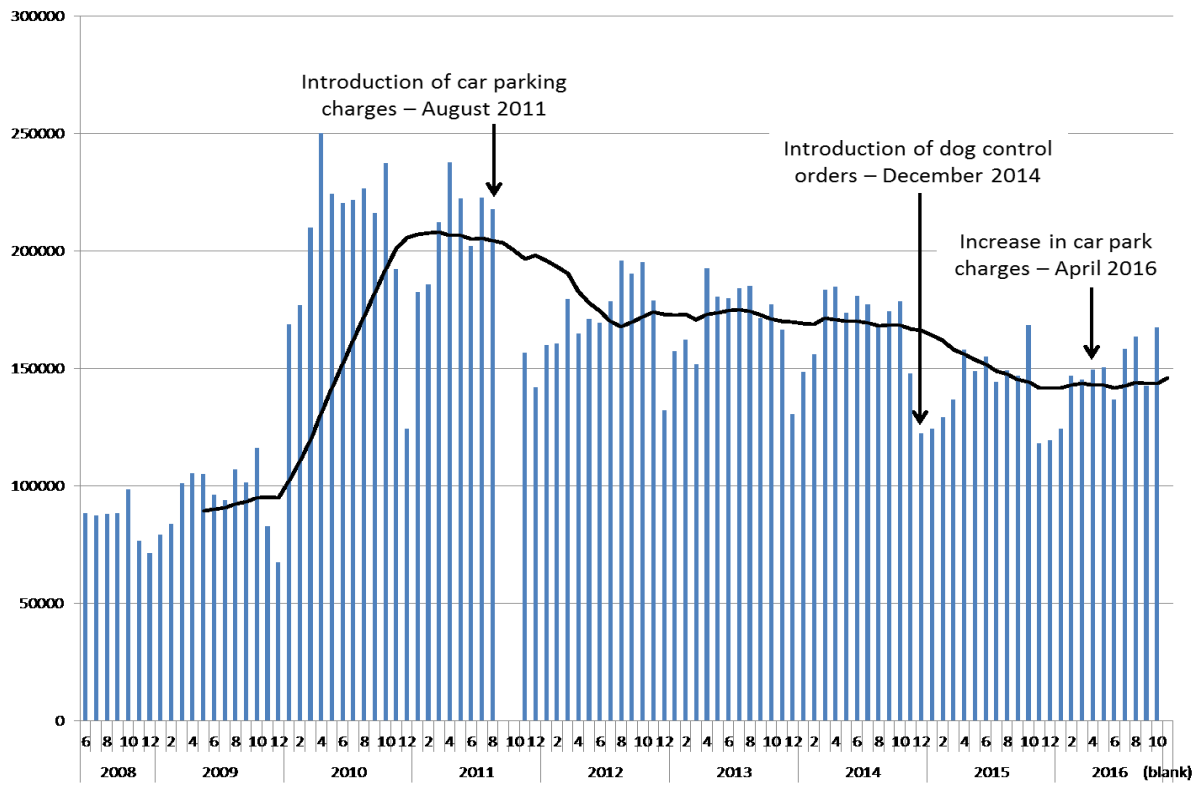


Chart C. Estimate of annual dog numbers 2008 - 16

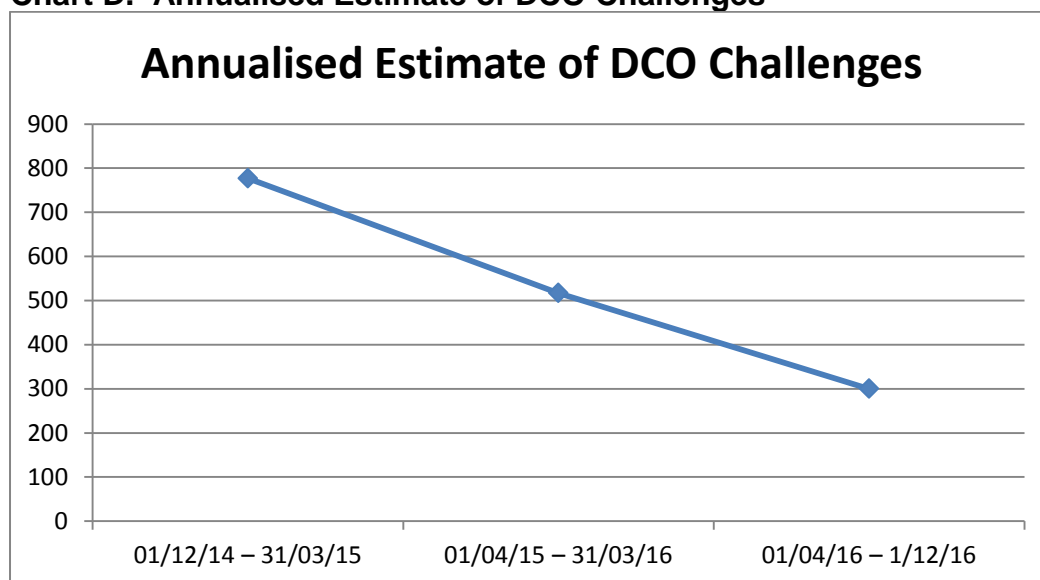


Section 2. Outcome of monitoring programmes to date.

Table 1. DCO Challenges resulting from Ranger activities. Dec 1st 2014 – Dec 1st 2016

| Period | No of DCO challenges | No challenges/month | No of people –ve reactions |
|---------------------|-------------------------------|---------------------|----------------------------|
| 01/12/14 – 31/03/15 | 259 (annualised estimate 792) | 64.75 | 11 |
| 01/04/15 – 31/03/16 | 517 (actual) | 43 | 23 |
| 01/04/16 – 1/12/16 | 225 (annualised estimate 281) | 28 | 23 |

Chart D. Annualised Estimate of DCO Challenges



These figures have been annualised as the 1st and 3rd reporting figures are for 4 and 8 months respectively. Only the second reporting period is for a whole 12 month period

Table 2

| DCO challenge type | % Of all DCO challenges for the years | | |
|---|---------------------------------------|---------------------|-------------------|
| | Dec 14 – Mar 15 | April 15 – March 16 | April 16 – Nov 16 |
| <u>Schedule 1.</u> Not picking up dog mess. | 3.8% | 2.1% | 2.2% |
| <u>Schedule 2.</u> Dog off lead in on lead area | 86.5% | 87.6% | 89.8% |
| <u>Schedule 3.</u> Dog not under effective control in dogs off lead area | 9.3% | 8.6% | 4.9% |
| <u>Schedule 4.</u> Dog in café area | 0.4% | 0.8% | 3.1% |
| <u>Schedule 5.</u> More than 4 dogs | 0% | 0.6% | 0% |

Comparing pre DCO data with Post DCO 'Nuisance' data

Rangers have continued to record dog related incidents in the same format as they did before the introduction of DCO's in 2014. This allows a direct comparison pre and post DCO. Incidents recorded in Table 3 tend to be of a less serious or 'nuisance' nature and are simply noted under the categories shown below.

| Table 3. Pre and Post DCO 'Nuisance' data (figures in () are annualised for year on year comparison) | | | | | | |
|---|-----------------------|--|--|---|------------------------------------|-----------|
| Year | Dogs reported missing | Dogs Not Under Effective Control Dogs seen with no owner in sight | Dogs Not Under Effective Control Owner hasn't got dog UEC | Dogs not Under Effective Control Dogs running up to other visitors | Fouling | No collar |
| 12/13 | 15 | 56 | 78 | 18 | 72 | 13 |
| 13/14 | 10 | 45 | 92 | 19 | 28 | 14 |
| 14/15 | 14 | 36 Pre DCO =28 Post DCO = 8 | 70 | 15 | 34 Pre DCO = 24 Post DCO= 10 | 16 |
| 15/16 | 9 | 16 | 37 | 9 | 11 | 7 |
| 1/4/16 – 1/12/16 | 3 (4) | 4 (5) | 10 (14) | 1 (2) | 5 (7) | 1 (2) |

Chart E. Total nuisance incidents per annum (all types)

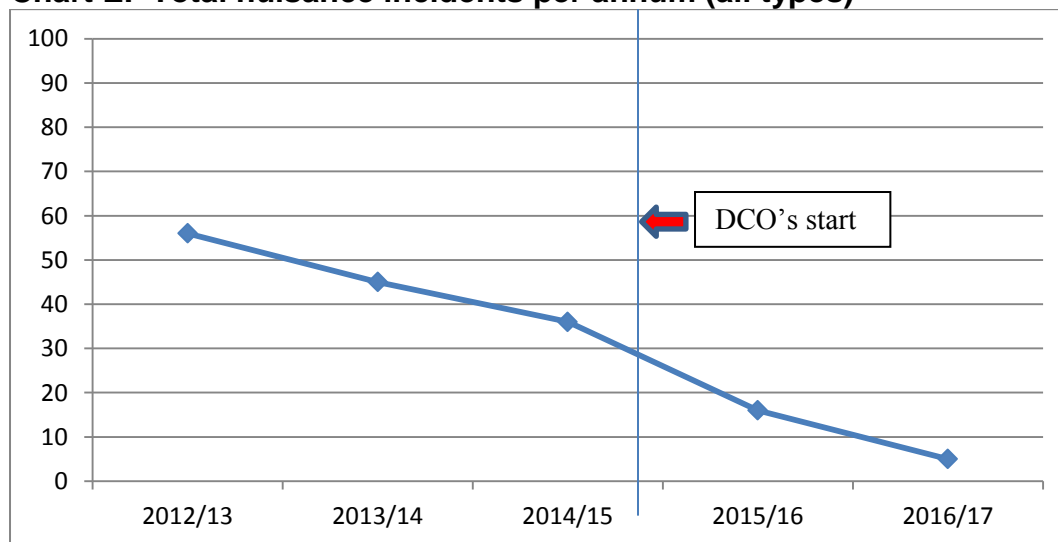


Chart F. Dogs reported missing 2012-2016 by year.

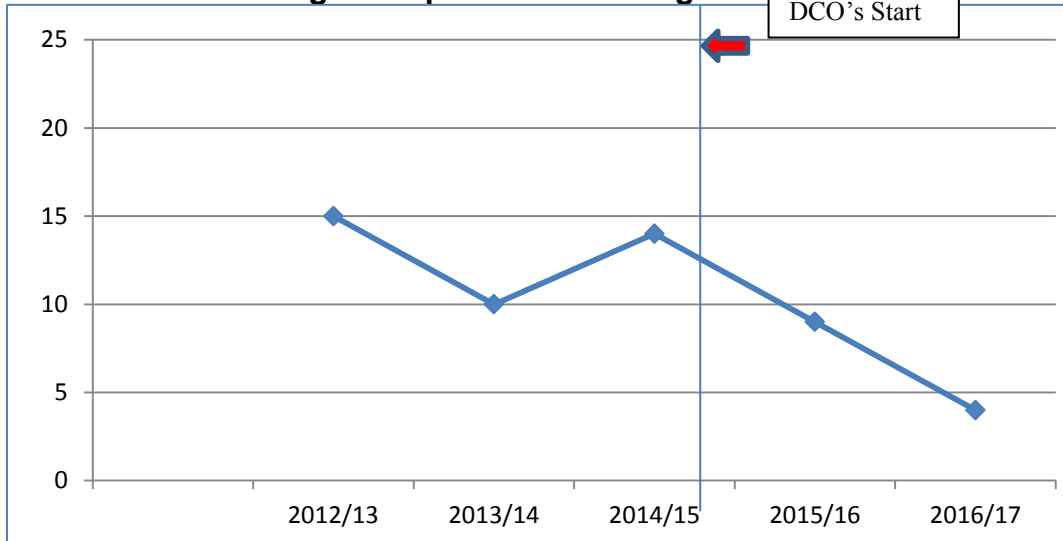


Chart G. Dogs seen with no owner in sight.

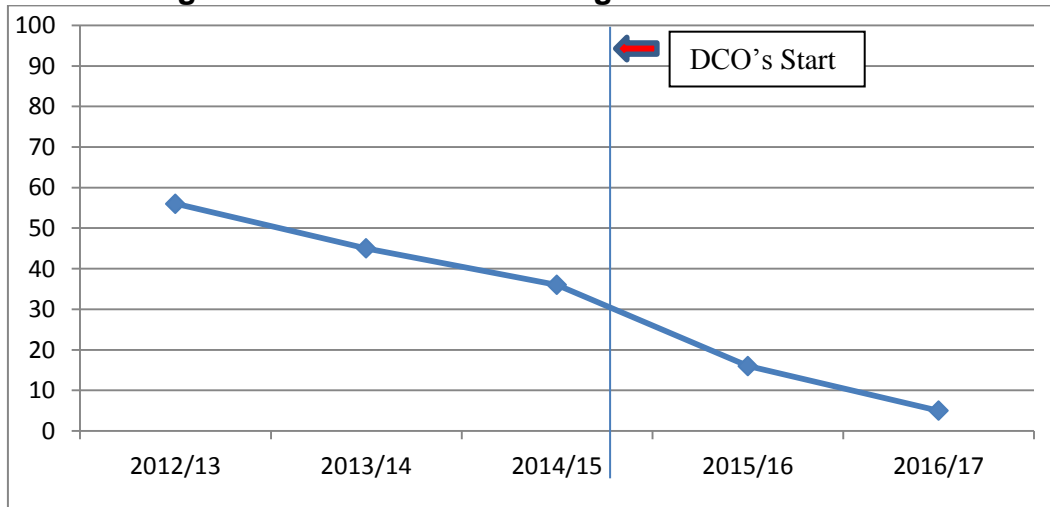


Chart H. Owner doesn't have dog under effective control.

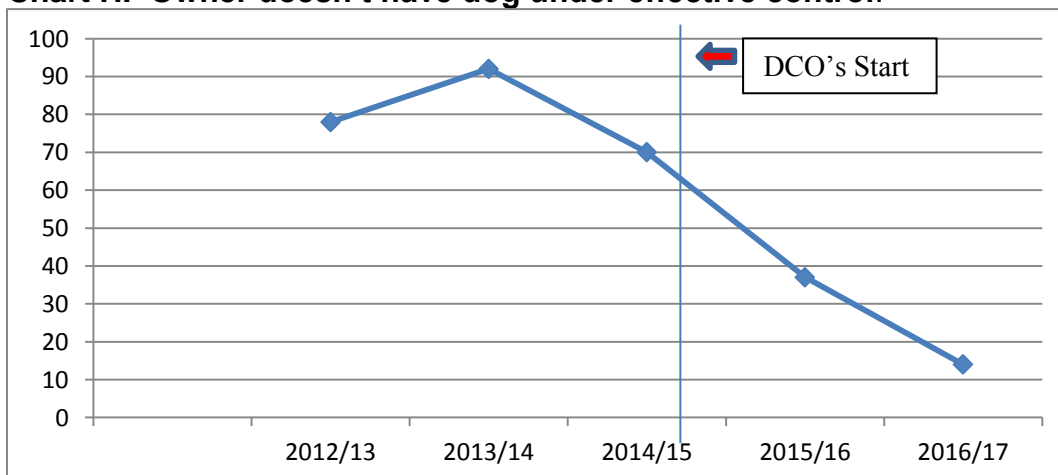


Chart I. Dogs running up to other visitors.

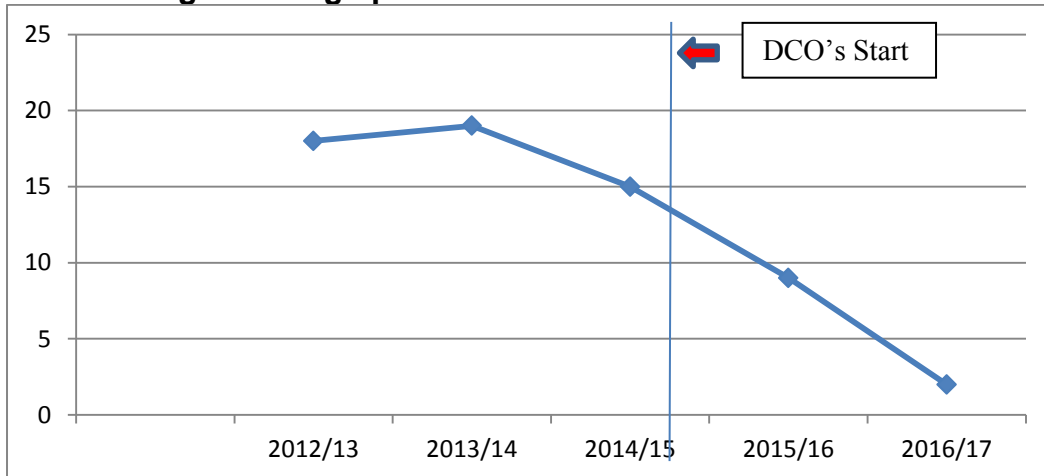


Chart J. Dog Fouling.

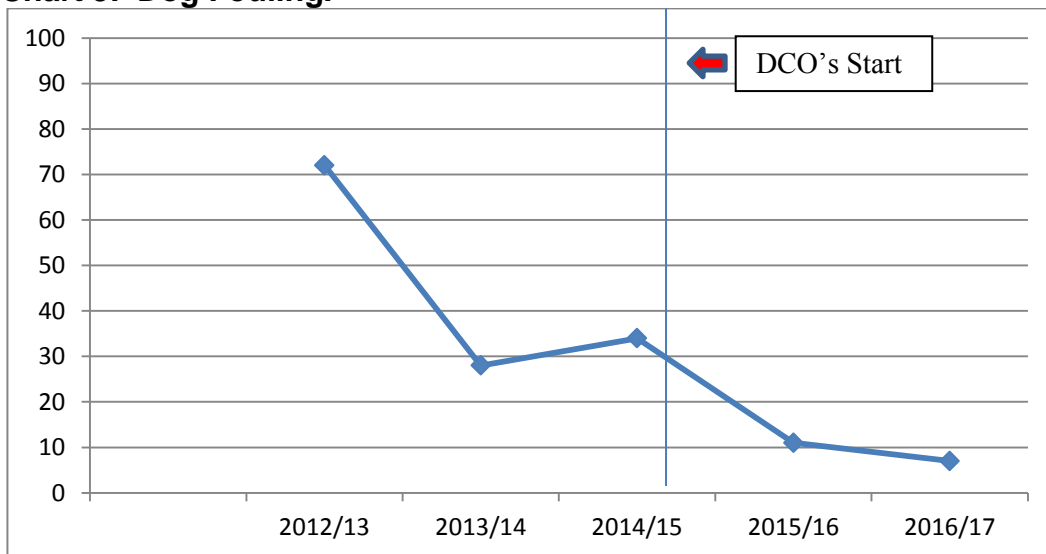
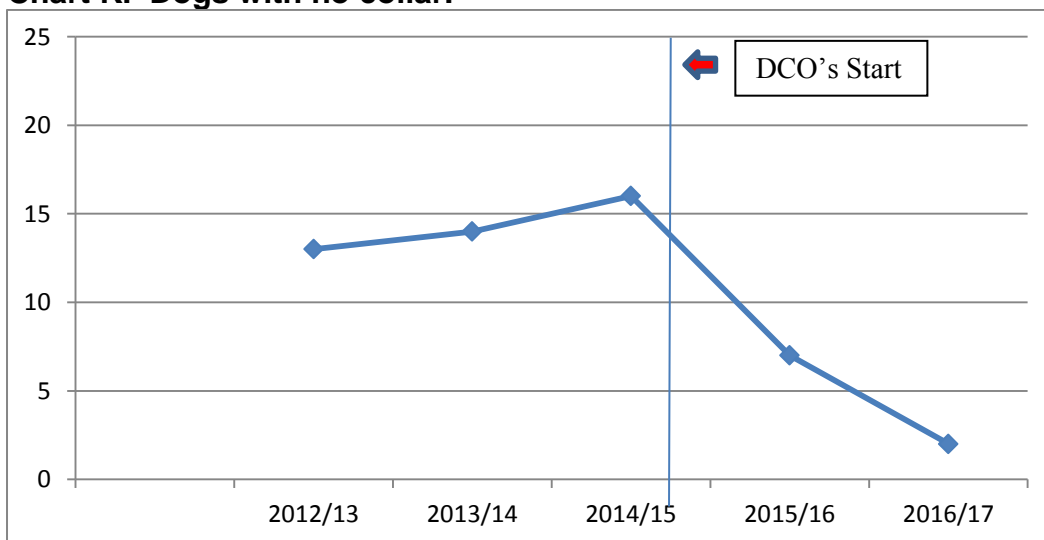


Chart K. Dogs with no collar.

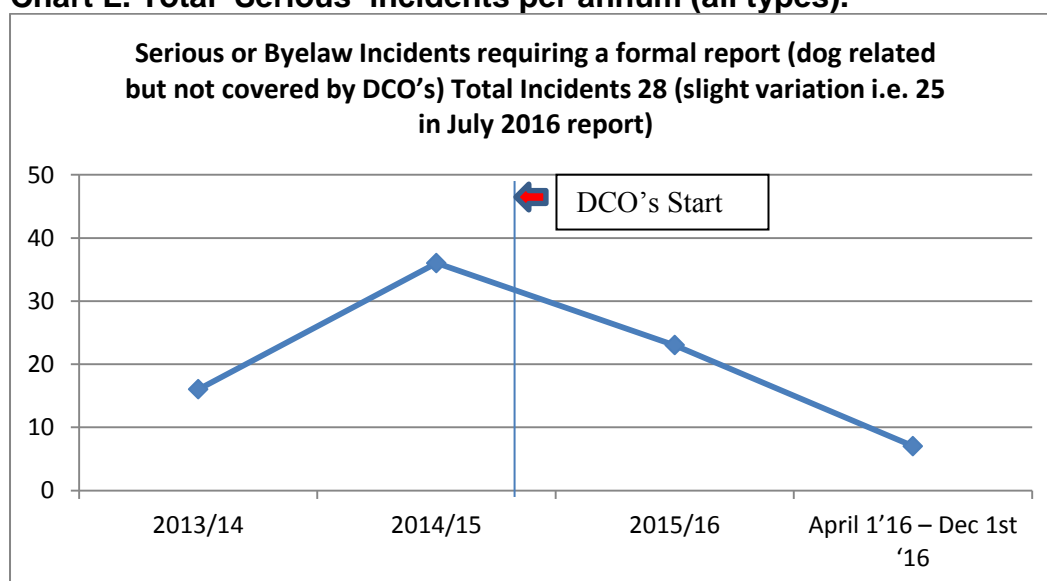


Some dog related issues are not DCO offences and must still be dealt with by the site's byelaws. E.g. if a dog is not under effective control in the Schedule 3 area then that is a Byelaw Offence. It only becomes a DCO offence if the owner is asked to put it on a lead and refuses. See Table 4 below:

| Table 4 Serious or Byelaw Incidents requiring a formal report (dog related but not covered by DCO's) | | | |
|---|--------------|-------------|------------------------|
| | DNUEC | Lost | Total incidents |
| 2012/13 | 21 | 7 | 28 * |
| 2013/14 | 12 | 4 | 16 |
| 2014/15 | 20 | 16 | 36 |
| 2015/16 | 19 | 4 | 23 |
| April 1'16 – Dec 1st '16 | 5 | 0 | 5 |

* Slight variation - 25 in July 2016 report.

Chart L. Total 'Serious' incidents per annum (all types).



The Dogs not under Effective Control (DNUEC) incidents shown in Table 4 and Chart L are therefore generally of a more serious nature than those shown in Table 3 and require a more formal record. A typical example of a serious incident would be a person being bitten rather than simply being jumped up at by a dog.

DCO Signage.

| Table 5. Vandalism to signs | | | |
|------------------------------------|-------------|-------------------------------|---------------------|
| Year | 2014 | 2015 | 2016 to date |
| | 0 | 11 (+1 from July 2016 report) | 32 |

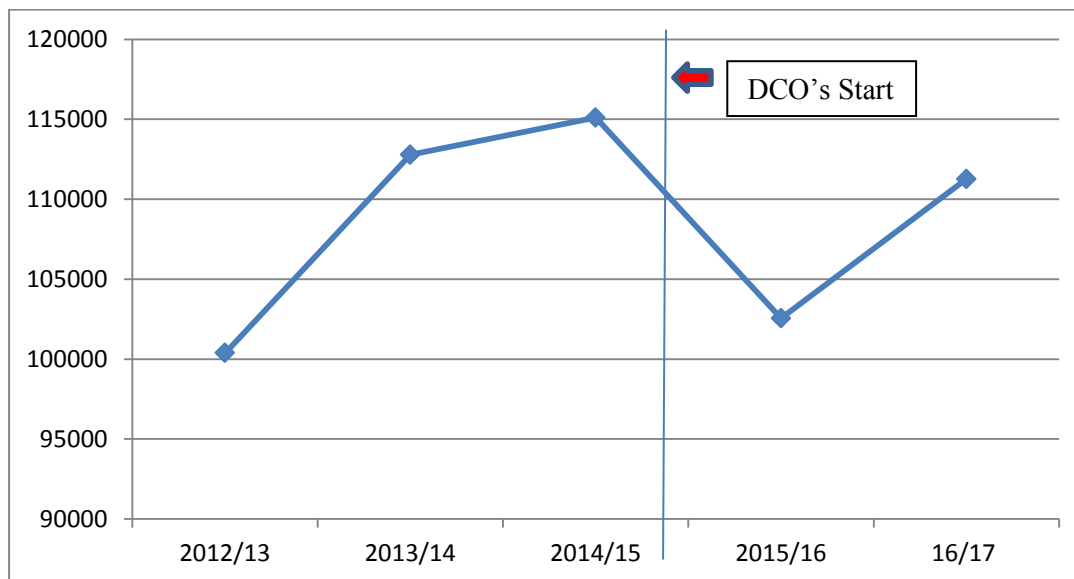
Number of Fixed Penalty Notices Issued for DCO offences.

| Table 6. Fixed Penalty Notices | | | |
|--------------------------------|------|------|--------------|
| Year | 2014 | 2015 | 2016 to date |
| | 0 | 0 | 0 |

Use of Dog Bags

| Table 7 Use of Dog Bags | | | | | |
|-------------------------|--------|--------|--------|--------|-----------------------|
| | 12/13 | 13/14 | 14/15 | 15/16 | 16/17 (annualised) |
| Dog Bags | 100375 | 112775 | 115100 | 102550 | 111257 |

Chart M.



Dog Mess incidents

| Table 8 'Flag the Poo' <u>Before</u> the introduction of DCO's | | | |
|--|-------------------------------|------------------------------|------------------------------|
| Date | March 2014 (single day event) | June 2014 (single day event) | Sept 2014 (single day event) |
| SCH2 | 46 | 72 | 41 |
| SCH3 | 55 | 61 | 54 |
| Total | 101 | 133 | 95 |

| Table 9. 'Flag the Poo records' <u>After</u> the introduction of DCO's | | | | | | | | |
|--|-----------|-----------|-----------|-----------|-----------|-----------|----------|-----------|
| Date | 31/01/15 | 21/02/15 | 16/05/15 | 02/08/15 | 01/11/15 | 30/01/16 | 23/05/16 | 10/9/16 |
| SCH2 | 2 | 3 | 1 | 1 | 1 | 1 | 2 | 1 |
| SCH3 | 14 | 18 | 11 | 10 | 14 | 11 | 6 | 9 |
| Total | 16 | 21 | 12 | 11 | 15 | 12 | 8 | 10 |

Transect Data – Compliance with Schedules 2 and 3.

| Table 10. Transects | | | | |
|---|------------------------------------|------------------------------|-------------------------|--------------------------|
| Schedule 2. Dogs on leads at all times | | | | |
| Transect occasions | Total number of people seen | Total no of dogs seen | No. dogs on lead | No. dogs off lead |
| 23 | 437 | 116 | 92 | 24 |
| Schedule 3 – Dogs off leads | | | | |
| Transect occasions | Total number of people seen | Total no of dogs seen | No. dogs on lead | No. dogs off lead |
| 12 | 203 | 143 | 38 | 105 |

Section 3 – Issues and concerns raised during the 2014 DCO consultation process introduction

A range of concerns were raised by the public during the DCO consultation period in 2014. Those concerned are now examined and compared to the data gleaned in the intervening period.

A. Concentrating dogs on the Main Common and Café area will see an increase of incidents in these busy areas.

| Table 11. Dogs Not Under Effective Control - Incidents on the Main Common and Café areas | | | | | |
|---|--------------|--------------|--------------|--------------|----------------------|
| Year | 12/13 | 13/14 | 14/15 | 15/16 | 16/17 to date |
| Incidents on Main Common and café areas as a percentage of all incidents | 50% | 55.5% | 31% | 33% | 40% |

Table 11 indicates an overall reduction in reported incidents in the Café and Main Common Areas following the introduction of DCO's. These areas are within the Schedule 3 'Dogs off Lead' area.

Data indicates that the overall, dog behaviour in both areas has improved, most significantly within the Schedule 2 area.

The underlying data also indicates a reduction (to zero) of incidents in the other busy areas around the ponds and easy access paths. These areas are within the Schedule 2 'Dogs on Lead Schedule'.

B. Dog walkers will show a preference for the Schedule 3 (Dogs off leads) area

A survey was conducted in 2016 to indicate patterns of visitor activity. This allows a comparison of similar data (not exact) collected in 2013.

A random sample of visitors were given GPS devices (or filled in paper maps) and their movements were tracked across the site during their visits. Visitors were also asked a few standard questions to facilitate data analysis.

Whilst the lengths of routes walked between 2013 and 2016 remain very similar the data indicates that the western side of the site (dogs on leads) appears to be used slightly less than it was pre DCO's with the balance appearing in the eastern side (dogs off leads).

C. Dog Walkers will leave Burnham Beeches and use other local open spaces.

To further investigate this issue the main local open spaces were recently contacted in May 2016 and again in December 2016 to seek any observed changes since the introduction of DCO's at Burnham Beeches:

A. Buckinghamshire Country Council - Black Park Country Park, Langley Park and Denham Park.

- i. Have not reported any significant displacement of dog walkers to their sites since December 2014 nor do they report any increase in dog related incidents/issues.
- ii. Black Park reports an increase in commercial dog walkers during the period i.e. people bringing over 4 + dogs. Burnham Beeches Rangers' have not noted a similar marked reduction in commercial dog walking at the site. Other recent influences that might explain this increase are the licensing of commercial dog walkers at the Royal Parks and parking restrictions at Windsor Great Park.

B. The National Trust - Cliveden

- i. Visitor numbers have not shown an increase over last 3 years
- ii. Commercial Dog walking is not allowed
- iii. Anecdotally the Trust's managers feel that they have seen an increase in dog numbers in recent years but not suddenly over the last year – just a gradual year on year increase.

D. 'Reputational harm will be caused to the City if DCO's are introduced'.

| Year | No of letters/emails/calls received relating to dog walking | Negative towards DCO's | Neutral or asking for information re DCO or other non DCO dog issues | Positive Re DCO |
|----------------------------|--|-------------------------------|---|------------------------|
| 01/12/14 To 31/3/15 | 15 (12 individuals) | 11 | 3 | 1 |
| 01/4/15 | 16 (13 individuals) | 10 | 5 | 1 |

| | | | | |
|-----------------------|----------------------------|----|----|---|
| To 31/3/16 | | | | |
| 01/4/16 – To 30/11/16 | 7 (7 individuals) | 1 | 3 | 3 |
| Totals | 38 (32 individuals) | 22 | 11 | 4 |

Table 13. Press activity Pre and Post the introduction of DCO's

| Pre DCO introduction | | |
|-----------------------|-----------|--------------|
| Number | For DCO's | Against DCOS |
| | 0 | 5 |
| Post DCO introduction | | |
| | 1 | 1 |

Table 14 Visitor surveys and similar feedback

| | | |
|-----------------------|---|---------------------------|
| 2014/15 | 60 second survey - 2014/15. 104 respondents. | 7 comments on dogs (7%) |
| 2015/16 | 60 second survey - 2015/16. 90 respondents | 13 comments on dogs (14%) |
| 2016/17 (to 30th Nov) | 60 second survey – 53 respondents to date | 8 comments on dogs (15%) |

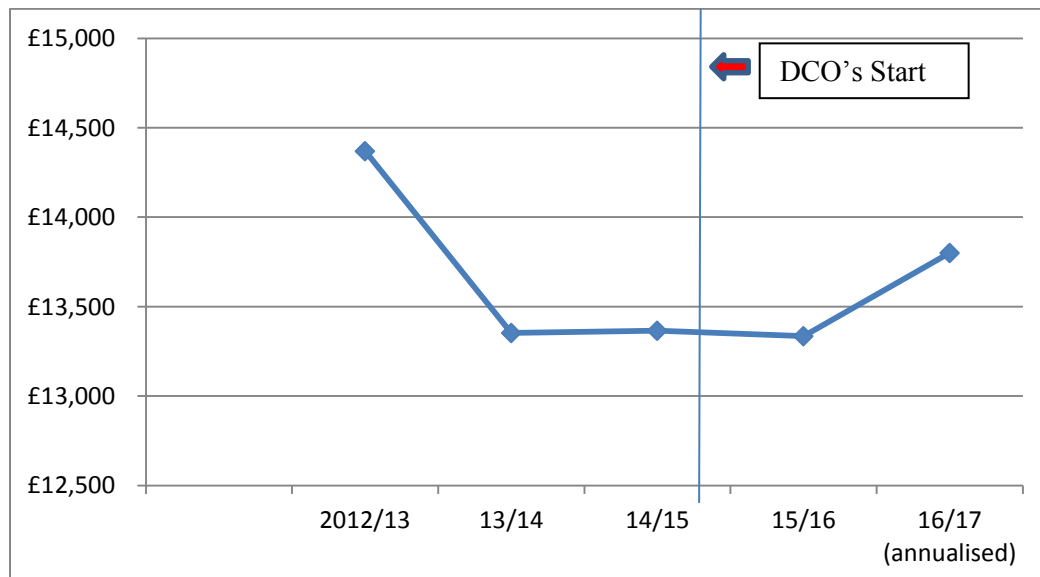
E. 'Income to the site will fall dramatically due to fewer visitors to the site.

Car Park income – donations via car park machines during normal weekdays

Table 15 Car park donations – Year on Year comparisons

| Donations via car parks | 12/13 | 13/14 | 14/15 | 15/16 | 16/17 (annualised) |
|-------------------------|----------------|----------------|----------------|----------------|--------------------|
| | £14,369 | £13,352 | £13,365 | £13,334 | £13,800 |

Chart N



Car Park Income – Charges for parking at weekends and Bank Holidays

| Table 16 Car Park Income (Gross) – Parking Charges | | | | | |
|---|----------------|----------------|----------------|----------------|--------------------|
| Car parks | 12/13 | 13/14 | 14/15 | 15/16 | 16/17 (annualised) |
| Charges Gross | £79,122 | £76,727 | £66,718 | £65,534 | £81,792 |

Chart O. Car park income weekends and Bank Holidays

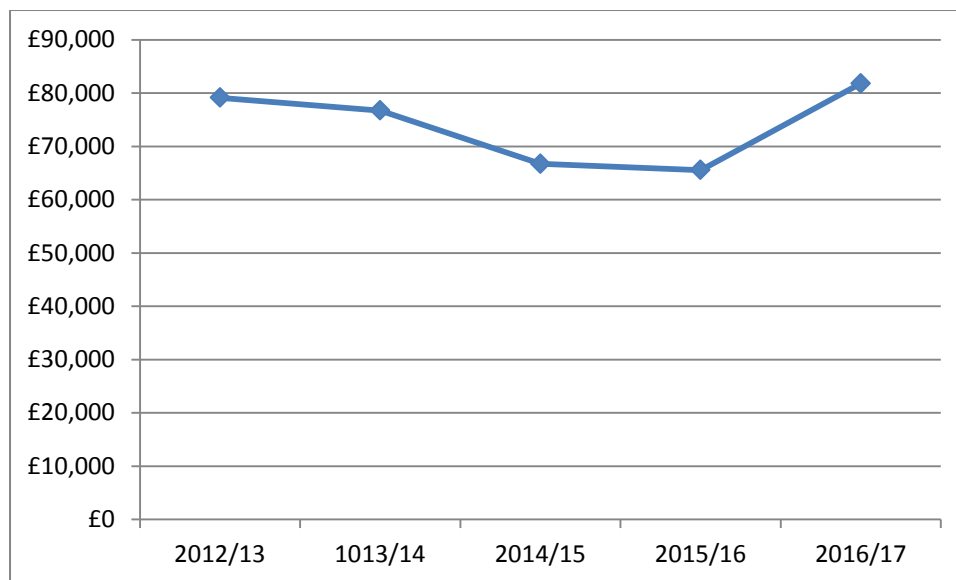
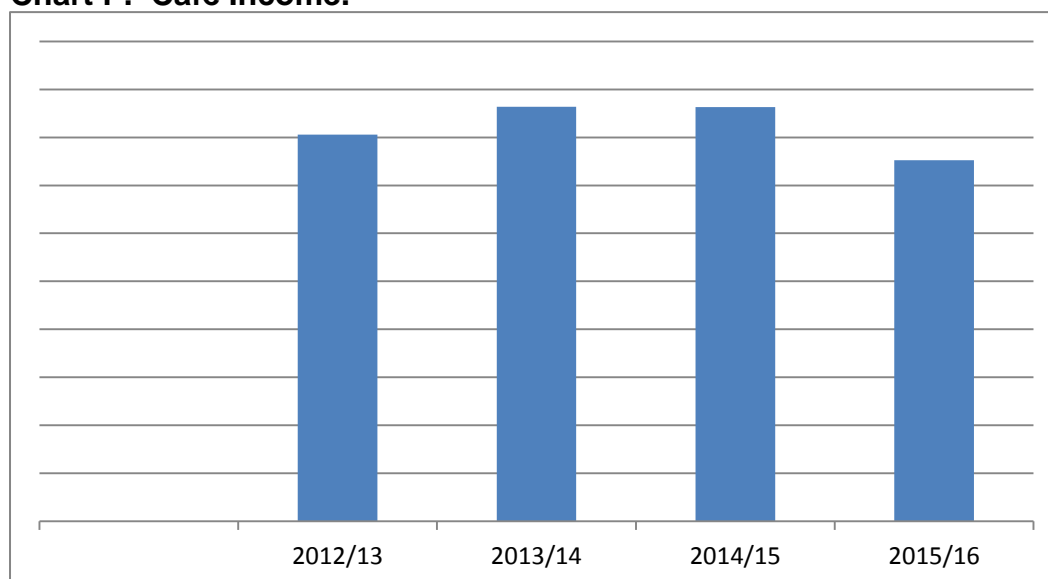


Chart P. Café Income.



| Table 17 Determine general donation incomes | | | | |
|--|-------------|-------------|-------------|-------------|
| | 2013 | 2014 | 2015 | 2016 |
| Donations | £835 | £1045 | £865 | £1825 |

Chart Q. General Donations 2013-16

